

GCSE DRAMA

The Crucible



Consolidation

Pack

Task 1: The Crucible Plot Summary

Fill in the blanks

Act 1: Reverend Parris discovers the girls _____ in the forest. Rumours of witchcraft begins. Abigail accuses others to deflect blame.








Act 2: The relationship between John and Elizabeth Proctor is _____. Elizabeth is arrested.

Act 3: In the court scene, John Proctor tries to expose _____. Mary Warren turns on him and John Proctor is arrested. Everyone finds out that John has committed the sin of _____.

Act 4: John Proctor wrestles with his conscience. Chooses to _____ rather than confess falsely.

Task 2: Key Characters

Match the characters with the correct description

John Proctor		Obsessed with order and authority.
Elizabeth Proctor		Servant, weak-willed and easily influenced.
Abigail Williams		John's wife, good morals, cold at times and falsely accused.
Reverend Parris		Tragic hero, farmer, moral and tries to expose the truth.
Reverend Hale		Self-serving, concerned about his reputation.
Mary Warren		Antagonist, manipulative, former servant of the Proctors.
Judge Danforth		Expert on witchcraft, begins confident when questioning the girls but ends disillusioned.

Task 3: Performance Skills

For performance skills you must think about:

Voice: *pitch, pace, tone, pause, volume, intonation*

Movement: *posture, gestures, facial expressions*

Interaction: *eye contact, proxemics, physical contact*

Use of space: *positioning, levels, stage directions*

Answer the following acting questions:

Act 1: Betty's Bedroom

How would you perform **Abigail** in Act1 to show her need for control over the other girls?

How would you use your voice to show **John proctor's** frustration with Abigail in Act 1?

How would you show **Parris'** fear of losing his reputation in Act 1?

How would you show **Tituba's** fear and desperation when she is accused of witchcraft?

How could you use movement and tone of voice to show **Mercy's** loyalty to Abigail in Act 1?

Act 2: The Proctor Household

How would you use eye contact and movement to show John's tension with Elizabeth in Act 2?

How would you show that Elizabeth is suspicious of John in Act 2?

How would you use your voice to show Mary has gained power after attending the court?

How would you perform Cheever's arrival to show his discomfort and duty to the court?

Act 3: The courtroom

How would you perform John Proctor in this act to show he is desperate?

How would you show Elizabeth's fear when she lies in the court to protect John Proctor?

How would you perform Mary when she turns on John Proctor under pressure from the girls?

How would you show Danforth's authority in the courtroom?

Act 4: The Jail

How would you show Elizabeth forgiving John Proctor in Act 4?

How would you show Hale's desperation to save John Proctor?

How would you perform Parris to show his panic and fear as the town turn against him?

How would you show that Rebecca Nurse remains calm in the final moments?

Task 4: Design Elements

Costume, Set, Props

List ideas for costume pieces for each character	Does this costume piece show Proctor as a Puritan/ Farmer or religious man?	How could the actor interact with this costume piece?	Give a quote where they might do this.
John Proctor			
Elizabeth Proctor			
Abigail Williams			
Mary Warren			
Reverend Parris			
Reverend Hale			

Tituba			
Judge Danforth			

Designing the set for each scene	What set pieces would you design for this scene?	How does it show the time of day or place?	How does it reflect the mood or theme?
Example Act 3: Courtroom	I would use a wooden bench and stone walls	The setting is cold and dark	This shows the seriousness and fear of the trial
Act 4: Jail that John Proctor is in			
Act 2: Proctor's home			
Act 1: Betty's bedroom			

Deciding on a prop that would be used in each scene	Name a prop	Describe what the prop looks like (colour, material, size etc)	Which character would use the prop and what would they do with the prop?
Act 3: Courtroom			
Act 4: Jail that John Proctor is in			
Act 2: Proctor's home			
Act 1: Betty's bedroom			

Task 5: Understanding Lighting Terminology

Step 1

LANTERNS

Profile



Parcan



Most common lanterns



Sharp edge

Soft edge

Step 1

LANTERNS

Floodlight



Step 1

LANTERNS

Barn doors



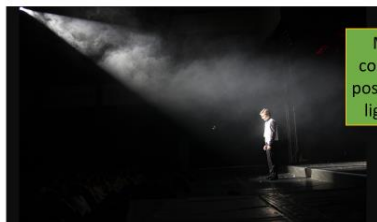
Distinguishes space creating locations, divisions, setting



Step 1

LANTERNS

High Front



Most common position of lighting

Step 2

EFFECT

Gels



LED Lighting



Older technology



Colour changer



Step 2

EFFECT

Gobo's



Stencil over the lantern



Step 2

EFFECT

Strobe

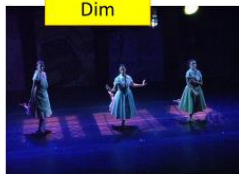


Step 2

EFFECT

Intensity

Dim



The transition from one lighting state to another

High Intensity/ Bright



Step 3

STAGING

Back light



Step 3

STAGING

General Wash



Which type of the **lighting** are the following:

1. Creates strong shadows_____
2. Used to highlight a character during an important moment_____
3. Which lighting can be used for a feeling of calmness_____
4. Which lighting can be used for a dramatic moment? _____
5. What lighting can be used for the darker scenes? _____
6. A lighting that can reflect a particular time of day or mood_____

Applying Lighting to The Crucible

Act 1: Betty's Bedroom

How would you use lighting to reflect the tension and fear in this scene?

Would you use a spotlight in this scene? If so, on which character and why?

What kind of lighting could be used to create a sense of secrecy?

Act 2: The Proctor's home

Which type of lighting can show the tension between John and Elizabeth?

What colour would you use to make it feel like it is set in a home?

Act 3: The courtroom

What lighting would you use to show the seriousness/formality of the courtroom?

If you wanted to draw attention to Abigail's manipulative behaviour, what kind of lighting would you use?

Act 4: The jail

Why could you use a dim light?

Would you use a spotlight? If so, why?

How and when could you use shadows within the scene?

Reflecting on lighting design choices

1. **Which lighting technique do you think is most important for The Crucible and why?**

2. **How can lighting help the audience understand the journey of a character?**

3. **What lighting effects do you think are essential to creating the play's overall atmosphere of fear, hysteria and tension?**

Task 6: Themes and Context

Theme: Power

Which character(s) does it link to? _____

Key moment/Quote? _____

Theme: Fear

Which character(s) does it link to? _____

Key moment/Quote? _____

Theme: Manipulation

Which character(s) does it link to? _____

Key moment/Quote? _____

Theme: Reputation

Which character(s) does it link to? _____

Key moment/Quote? _____

Theme: Judgement

Which character(s) does it link to? _____

Key moment/Quote? _____

Theme: Justice

Which character(s) does it link to? _____

Key moment/Quote? _____

Theme: Religion

Which character(s) does it link to? _____

Key moment/Quote? _____

Theme: Puritan Lifestyle

Which character(s) does it link to? _____

Key moment/Quote? _____

Theme: Goodness

Which character(s) does it link to? _____

Key moment/Quote? _____

Theme: Guilt

Which character(s) does it link to? _____

Key moment/Quote? _____

Task 7: Character Web

What does the reader know about John Proctor at the start of the play?

What does he want?

**JOHN
PROCTOR**



What does the reader know about John Proctor at the end of the play?

Who does he love/hate?

Draw your own spider web for 3 other characters of your choice, answering the same questions.

Character 1:

Character 2:

Character 3:

Exam Questions

You are going to play **Proctor** in this extract. Give two ways you would use vocal skills to communicate this character in this extract. (pg. 44-47)

(4 marks)

1. _____

2. _____

You are going to play **Hale** in this extract. Give two ways you would use vocal skills to communicate this character in this extract. (pg. 52-55)

(4 marks)

1. _____

2. _____

You are going to play **Elizabeth** in this extract. Give two ways you would use vocal skills to communicate this character in this extract. (pg. 46-49)

(4 marks)

1.

2.

You are going to play **Proctor** in this extract. Give two ways you would use physical skills to communicate this character in this extract. (pg. 44-47)

(4 marks)

3.

4. _____

You are going to play **Hale** in this extract. Give two ways you would use physical skills to communicate this character in this extract. (pg. 52-55)

(4 marks)

3. _____

4. _____

You are going to play **Elizabeth** in this extract. Give two ways you would use physical skills to communicate this character in this extract. (pg. 46-49)

(4 marks)

3. _____

4.

6 markers: From the same page numbers above

You are going to play Hale. **He is determined to discover the truth.**

As a performer, give **three** suggestions of how you would use **performance skills** to show this.

You must provide a reason for each suggestion

(6 marks)

1.

2.

3. _____

You are going to play Elizabeth. **She is a good puritan woman.**

As a performer, give **three** suggestions of how you would use **performance skills** to show this.

You must provide a reason for each suggestion

(6 marks)

1. _____

2. _____

3. _____

You are going to play John Proctor. **He is defending himself.**

As a performer, give **three** suggestions of how you would use **performance skills** to show this.

You must provide a reason for each suggestion

(6 marks)

1.

2.

3.

Costume Design 9 Marker

EXTRACT – Page 54 and 55

Exam Question:

As a director, discuss how you would use one of the production elements below to bring this extract to life for your audience. You should refer to the context in which the text was created and first performed.

Choose one of the following:

- Lighting
- Set
- Costume

Paragraph 1

What is happening with John Proctor in this extract?

- _____

What costume would John Proctor be wearing? (Names, colours, condition)

- _____

What does the costume show about John Proctor? And how does it show it? (He is a Puritan man/ a farmer/ religious/ something about his personality/ theme?)

- _____

When will John interact with his costume?

Give a quote from Page 54 – 55:

- _____

What action would John do with his costume? (e.g. rub his head with his sleeve)

- _____

Why would John do this? (What does it show about his emotions/ what he's thinking/ his reactions)

- _____

What does this show the audience?

- _____

Paragraph 2

What is happening with Elizabeth Proctor in this extract?

- _____

What costume would Elizabeth Proctor be wearing? (Names, colours, condition)

- _____

What does the costume show about Elizabeth Proctor? And how does it show it? (She is a Puritan woman/ a housewife/ religious/ something about her personality/ theme?)

- _____

When will Elizabeth interact with her costume?

Give a quote from Page 54 – 55:

- ---

What action would Elizabeth do with her costume? (e.g. adjust her hair in her bonnet/ grab and pull on her apron)

- ---

Why would Elizabeth do this? (What does it show about her emotions/ what she's thinking/ her reactions)

- ---

What does this show the audience?

- ---

Paragraph 3

What is happening with Reverend Hale in this extract?

- ---

What costume would Reverend Hale be wearing? (Names, colours, condition)

- ---

What does the costume show about Reverend Hale? And how does it show it? (He is a Puritan man/ a reverend/ religious/ something about his personality/ theme?)

- ---

When will Reverend Hale interact with his costume?

Give a quote from Page 54 – 55:

- ---

What action would Reverend Hale do with his costume? (e.g. tip his hat/ pull on his clerical collar/dust his cloak)

- ---

Why would Hale do this? (What does it show about his emotions/ what he's thinking/ his reactions)

- ---

What does this show the audience?

- _____

12 Marker (Act3)

Abigail seems terrified.

As a director, discuss how the performer playing this role might demonstrate this to the audience in this extract and the complete play.

You must consider:

- voice
- physicality
- stage directions and stage space.

The paragraph below is on Voice. Complete a paragraph for Physicality and Stage Space/Stage directions

Abigail seems terrified

Voice

In this extract Abigail Williams is portrayed as hysterical and frightened of what she claims is Mary's familiar spirit in disguise as a yellow bird, this is in order to fool the court. Therefore as a director I would instruct the performer to explore with their use of voice to help portray her desperate act.

Firstly in the moment when she says 'The wings! Her wings are spreading!' I will ask the performer to screech loudly, building up the volume throughout the line in a fast pace. This will suggest that she is panicked and scared of what she can see, taking all the attention away from what Mary might admit to Danforth. I will also ask Abigail to speak in a flustered tone on the line, 'She's going to come down! She's walking the beam!' And I would ask her to emphasise both of the 'She's' in her speech, this will show that Abigail is appearing to be certain that it is Mary's spirit.

This behaviour is similar to when Abigail begins to freeze in the courtroom and the rest of the girls follow her lead. We know that Abigail manipulates those around her for example when she threatens the girls not to tell in Act 1 and the way she tries to seduce John Proctor in Act 1.

Therefore her hysterics in this scene would allow the audience to feel sympathy towards her victims because we can see how Abigail will stop at nothing to save herself.

