



TRUTH



TIME



TEAMWORK



COVID19 Behaviour policy addendum June 2020

Behaviour Policy arrangements for
returning Year 10 and Year 12 students
due to Coronavirus outbreak.

Student orientation



Student code of Conduct

Student Code of Conduct COVID 19 Additions

To create a calm and orderly learning environment, students must always:

- Arrive on time for the School day so that students can be socially distanced;
- Attend School in the clothing set out in the guidance which includes a plain tracksuit or PE kit that is washable on a daily basis;
- Line up at designated points on the playground observing social distancing;
- Enter the School building only under the supervision of staff;
- Follow the School one way system to help observe social distancing;
- Use only the planner, pencil case and equipment provided by the School and leave this on the School site each day;
- Complete all work set;
- Stay on task and allow others to do so;
- Follow all Health and Safety instructions including new guidance about COVID 19 particularly the washing of hands and new hygiene protocols and social distancing;
- Remain in allotted student groups or 'bubbles' to help observe social distancing;
- To arrive and leave from school on your own helping to observe social distancing;
- No eating on the school site is permitted only water.



Consequences for breaching the code of conduct

Behaviour leading to an exclusion

- Students must never spit or deliberately cough at another student or member of staff;
- Create disorder by pretending to cough or sneeze or mimic illness;
- Refuse social distancing requests or on call requests to leave a room;

'On call' is to be alerted immediately and this will be myself or Mr Hall. The length of the exclusion will be decided by Ms Heffernan

Criteria for the 'On call system'

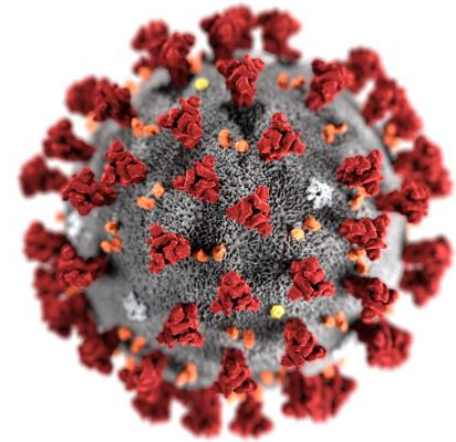
Persistent poor behaviour after two warnings/Deliberate breaches of Social distancing/Behaviour leading to an exclusion.

The use of the on call system remains the same as outlined in the pre COVID Behaviour Policy. The inclusion room will have a limited capacity and will be socially distanced. Students who are referred to 'on call' must leave the room when asked and follow the one-way system to the inclusion room. Referral to the inclusion room during the pandemic will be treated as a very serious breach of the School's Behaviour Policy and could lead to an exclusion. Decisions on this will be made by the Headteacher and the outcome of any repeated challenge at this difficult time.



Cardinal Pole
Catholic School

Scientific Briefing



Covid- 19- School Return



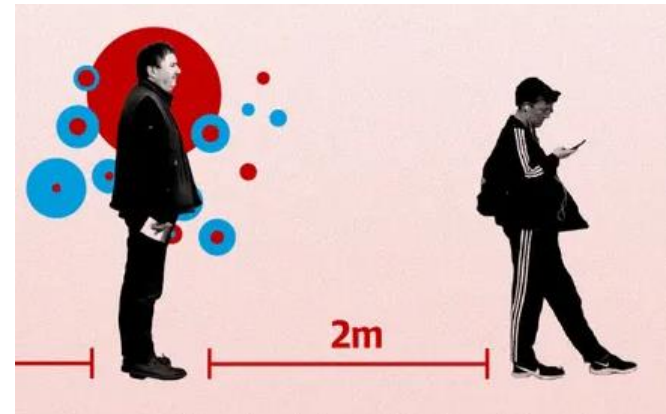
Where are we currently?

- In the UK to date there have been just over 40,000 deaths from Covid-19.
- Currently, about 4 in every 1000 people is suspected to have the virus.
- The good news is that new cases and new deaths are falling.
- However there is still no vaccine.

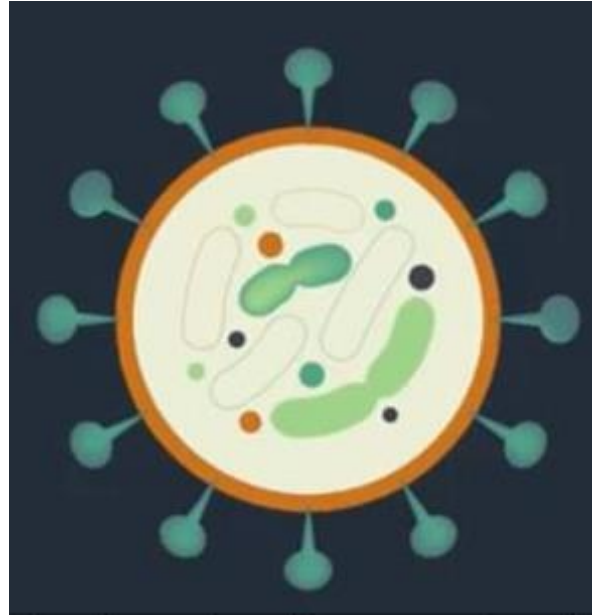


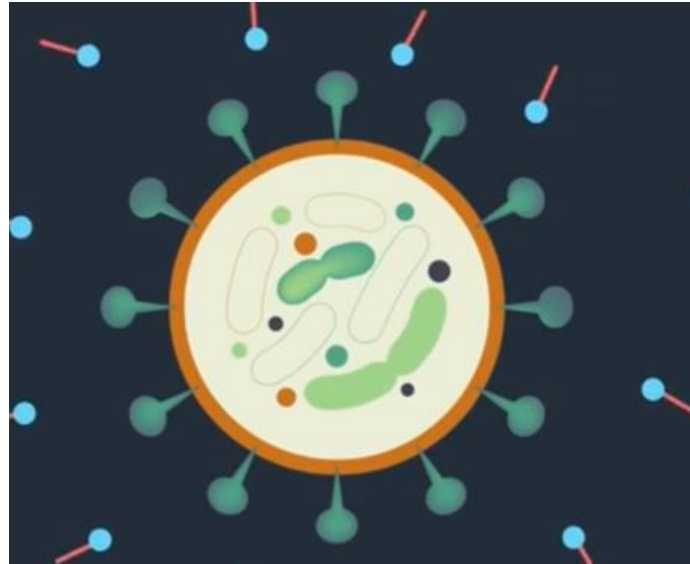
What can you do to protect yourself?

- Staying socially distanced at 2 metres.



- Washing your hands regularly and thoroughly with soap...









Face masks/coverings and gloves

